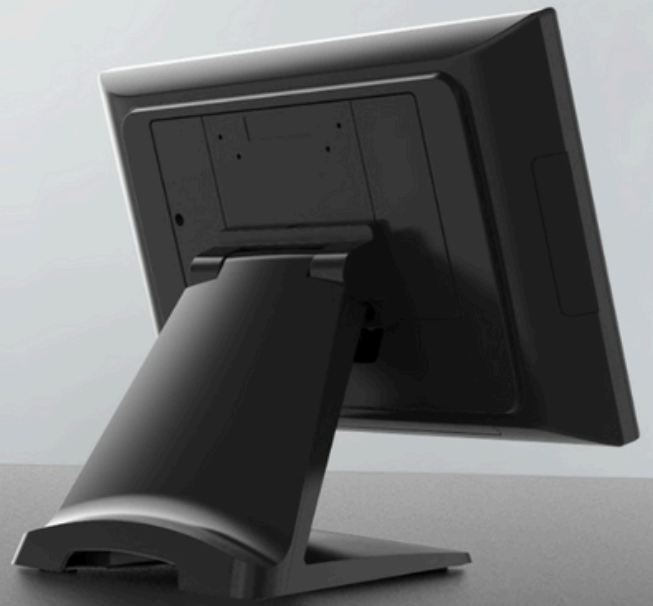




BOXTEC

CORE 3 POS

Versatile All-in-One 15.6" POS Solution

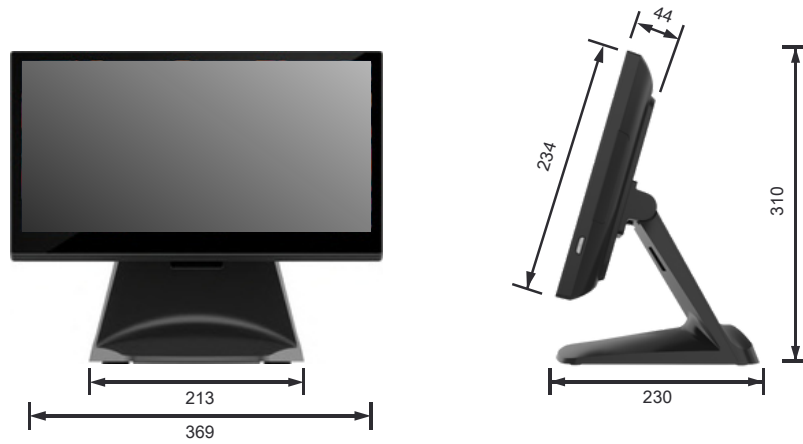


KEY FEATURES:

- Integrated with Intel® Alder Lake-N processors
- Support Windows, Linux, and Android operating systems
- Full HD 15.6" widescreen PCAP touch
- Effortless SSD repairs and maintenance facilitated by the service door design
- Versatile selection of peripherals for better functionality

DIMENSIONS

CORE POS 3



Unit: mm

SPECIFICATIONS

System	Motherboard	G35
	Processor	Intel® Alder Lake N Processor: N97 / i3-N305
	Memory	1x DDR4 8GB (supports up to 32GB)
	Storage	128GB SSD (M.2)
Display	Size and Resolution	15.6" 1920 x 1080
	Touch Screen	True-Flat PCAP Multi-touch
Expansion	M.2 (E Key)	1
I/O ports	USB Type-A	2 x USB3.0, 4 x USB2.0
	USB Type-C	1 x USB3.0 full-functioned (DP/PD 5V/3A, 12V/3A)
	Serial Port	3 x RJ48 (standard RS232) (default 0V; 5V,12V)
	LAN	1 x RJ45
	Cash Drawer	1 x RJ11
	FeDP	2 x FeDP (1 x for main display, 1 x for 2nd display)
	DC Jack	1 x 4PIN (with latch)
Optional I/O	Powered USB	1 x Powered USB 12V, 1 x Powered USB 24V (Optional)
Audio	Internal Speaker	1 x 3W
Indicator	Power Button	1
Power	Power Adapter	65W/19V (120W/19V with 1 x PUSB 12V & 1 x PUSB 24V)
Communication	WLAN + BT	802.11 series, BT5.0 (Factory Option)
Peripheral (option)	MSR	3-Track MSR (USB)
	NFC	NFC Reader (USB)
	Fingerprint	Fingerprint Reader (USB)
	2D Scanner	2D Scanner (USB)
	Customer Display	LCM display 2 x 20 characters (USB)
2nd Display	11.6" 2nd display	
Certificate	EMC & Safety	FCC Class A, UKCA, CE Mark, LVD
Environment	Operating Temperature	0°C ~ 35°C (32°F ~ 95°F)
	Storage Temperature	-20°C ~ 60°C (-4°F ~ 140°F)
	Humidity	20% ~ 85% RH non-condensing
Dimensions	W x H x D	369 x 310 x 230 mm (14.5" x 12.2" x 9")
Mounting	VESA Mount	75 x 75, 100 x 100
OS Supported		Windows 10 / 11 IoT Enterprise, Linux, Android 13.0

※ PRODUCT SPECIFICATIONS AND DATA ARE SUBJECT TO CHANGE WITHOUT NOTICE ※