

Compact kiosk printer for wide format documents
 - full A4 or Letter paper width

- A4 or Letter width printouts
- Loop presenter
- Pull detector
- Retract & retain
- Fast 100 mm/s print speed
- Easy paper path access
- Large roll capacity: 250mm OD
- Roll or fanfold stock

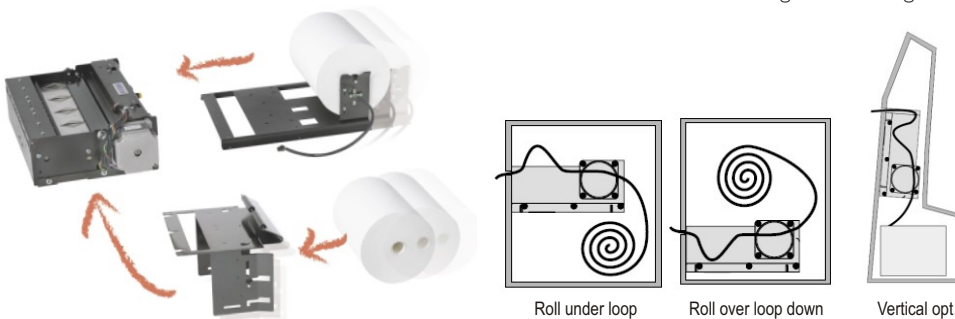
professional
printer
 solutions



TTP 8000 A4/Ltr Kiosk printer

The Zebra TTP 8200 is robust, simple and extremely reliable. It can handle unfriendly environments, e.g. cold, heat, strong vibrations. Its only consumable is paper (on rolls or fanfold), and it requires minimal maintenance. The TTP 8200 offers practical functions such as a built-in paper cutter and a presenter; which keeps the paper inside the printer and feeds it out only after printing is completed, thereby reducing the risk of error. The user can not pull the printout until printing is completed.

The TTP 8200 is a complete flexible printing concept. Every aspect of kiosk printing is addressed, from mounting position, to paper handling, to power supply, and much more. For instance the available roll holders make it possible to fit rolls of up to 150 mm behind the printer, but also both 150 mm and 250 mm rolls under the printer. The ingenious roll holder fits both roll sizes without being larger than a 150 mm holder. There is no limitation to kiosk design when using a Zebra kiosk printer.



Application examples

- Internet kiosks
- Information terminals
- Multimedia kiosks
- ATM / bank statements
- Form printing
- Employment kiosks
- Human resource kiosks

GENERAL

Printer control	Windows and Linux drivers. Direct addressing through ESC sequences
Print method	Direct thermal line printing
Print width	216 mm (1728 dots)
Resolution	203 or 300 dpi (8 or 12 dots/mm)
Print speed	Up to 100 mm/s
Interfaces	Parallel IEEE-1284 and USB. Optional external RS-232 serial interface.
Cutter	Guillotine cutter.

TEXT MODE

Orientation	Portrait or landscape mode
Type fonts	8 bitmap fonts can be stored.
Text attributes	Underline, Bold, Italics, reverse print, multiple width and height
Character set*	Windows Code Page 1252 (Western)
Bar codes	Code 39 (font), other bar codes on request
Graphics	Logotypes and b&w BMP-files

PAPER

Paper supply	Roll or fanfold paper
Paper width	A4 (210 mm) or Letter (8.5")
Image life	More than 25 years with appropriate paper
Roll diameter	250 mm max
Spindle diameter	25 mm minimum
Printout length	Variable, no upper limit, minimum 200 mm - A4 (297 mm) - Letter (11")
Paper weight	55 – 110 g/m ² (0.054 – 0.1 mm)
Looping presenter	Stores the printout until printed and cut. Pull-Detector, Exact eject length (6 mm steps) & Retract & Retain function.
Optical sensors:	Out of paper, paper near end (optional) and weekend level sensor (optional). Black mark.
Switch sensors:	Cutter in home position, printhead lifted.

MISCELLANEOUS

Typical throughput	14 pages / minute (A4 length)
Environment	Operating: 0 to +50°C Storage: -20 to +60 °C Operating: 35 to 75% RH, non-condensing Storage: 10 to 90% RH, non-condensing
Size	286 x 78 x 171 mm (w x h x d) Weight 4.8 kg
Power requirements	24Vdc ± 10%. Idle 150mA. Printing average 6A, peak 12A
Safety	CE, UL, cUL

LIFE EXPECTANCY / MTBF

Printhead	More than 50 km paper More than 1x10 ⁸ pulse lines (typically)
Control board	40 000 hours (typically)
Cutter	500 000 cuts (typically)
MTBF	170 000 printouts (typically)

GRAPHICS MODE (Windows & Linux)

TTP 8000 can print any font, code-page, bar code, and graphics supported by the operating system

* 224-characters of a TrueType-font can be converted to SWC format and stored in printer



Zebra Technologies Europe Limited

ADDRESS	Zebra House, The Valley Centre Gordon Road, High Wycombe Buckinghamshire HP13 6EQ United Kingdom
PHONE	+44 (0)1494 472 872
FAX	+44 (0)1494 450 103
E-MAIL	MSEurope@zebra.com EMEAKioskTech@zebra.com
WEBSITE	www.zebra.com/kiosk